

# VAMPIRE 4 STANDALONE

AMIGA  
COMPATIBLE  
COMPUTER SYSTEM

Vampire  
User's Guide

V4+  
V4

A quick-start hardware setup guide  
to unleash the power of your new computer system.

  
APOLLO  
TEAM

# WARNING

Installation information in this document is for reference only.

All installation of internal optional devices or equipment including third-party optional devices or equipment, should be performed by an experienced and knowledgeable technician.

All servicing or upgrading of original or optional devices or equipment should also be performed by an experienced and knowledgeable technician.

**UNAUTHORIZED INSTALLATION, SERVICING OR UPGRADING MAY VOID YOUR WARRANTIES.**



## DISCLAIMER

The **Vampire V4+** is a computer developed in full compliance with electromagnetic standards. The Vampire V4+ ships with the open-source Apollo OS, which is compatible with the original operating system.

If you want to dispose of this equipment, please do not use the ordinary dust bin or rubbish disposal. Used electrical and electronic equipment must be treated **separately** and in accordance with regional legislation that requires proper treatment, recovery and recycling of used electrical and electronic equipment.

# First steps with your V4+



1. Disclaimer
2. First Steps with Your V4+
3. V4+ At a Glance
4. V4+ Checklist - Monitors
5. V4+ Checklist - Peripherals
6. Setting Up Your System:  
DB9 Mouse
6. Setting Up Your System:  
USB Mouse
7. Setting Up Your System:  
DB9 Joystick
8. Setting Up Your System:  
USB Gamepad
9. Setting Up Your System:  
USB Keyboard
10. Setting Up Your System:  
Certified Monitor
11. Setting Up Your System:  
Ethernet
12. Setting Up Your System:  
EU Power Supply
13. Setting Up Your System:  
US Power Supply
14. Getting Started
15. Troubleshooting: Boot Error
16. Troubleshooting: Display Error

## DEVICE PREPARATION:

**MONITOR:** You need a compatible monitor for your V4+. A vast majority of standard monitors are compatible. Your V4+ can output different Amiga and PC screen resolutions. Please note there might be some monitors, which are not able to show all these resolutions.

**ACCESSORIES AND EXTERNAL DEVICES:** With some V4+ bundle purchase options you have compatible devices included. If you have the V4+ Basic bundle, then you need compatible input devices such as an USB mouse, joypad and keyboard.

The list of compatible devices can be viewed at: [www.apollo-computer.com/peripherals.html](http://www.apollo-computer.com/peripherals.html)

# Your V4+ at a glance

## Disk LED

Indicates disk activity.  
Do not reset or power off when lit.

## Power LED

Show power status.  
Dimmed red light indicates  
Turtle Mode.

## USB mouse port

Connect supported  
USB mouse.

## USB joypad port

Connect supported  
USB joypad.

## DB9 mouse port

Connect DB9 mouse.

## DB9 joystick port

Connect DB9 joystick.

## Built-in CompactFlash drive

Internal hard-drive with OS, software,  
applications, games and file drawers.



## USB Mini-B

### PSU port

Power connector  
Connect V4+ to the  
certified adapter provided  
with by Apollo, using  
LogiLink 1.8m power cable.

## microSD slot

For additional disk storage,  
mounting ADF/ISO, making  
back-ups and easy file  
exchange with other  
computers.

## Digital AV Out port

Connect supported monitor/TV.

## USB keyboard port

Connect supported USB  
keyboard here.

## Ethernet port

Connect V4+ to your  
home network for  
Internet access  
and file sharing.



# V4+ Checklist

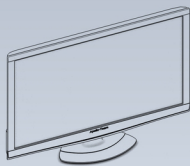
## Monitors

In general all digital monitors with output capabilities corresponding to the table below will work fine with your V4+. Most important before you connect your monitor to your V4+, please check the compatibility with the **default PAL output** that is used by classic OCS/ECS/AGA games **and the 720p output** (1280x720@50Hz) which is used as optimal SAGA (Super AGA) output for Apollo OS desktop.

Your V4+ has a **high quality digital sound** output integrated in the display output signal. Make sure that your monitor has an integrated audio capability (speakers) or specific audio output for attaching external speakers.

If your digital monitor or specific display device like streaming/capture unit, beamer or ultra hi-res monitor (4K/8K) is not compatible with either the display or audio output a digital upscaler with integrated audio-extractor is a possible solution.

The Apollo Team has tested and certified a limited list of monitors. This list will be extended based on user feedback on **Apollo Discord** ( <https://discord.gg/WnGk7MS> ).



Default V4 Resolutions			
New Resolutions available in R6			
AGA	Horizontal	Vertical	Refresh
PAL	720	576	50Hz
NTSC	720	480	60Hz
SAGA	Horizontal	Vertical	Refresh
S01	320	200	60Hz
S02	320	240	60Hz
S03	320	256	60Hz
S04	640	400	60Hz
S05	640	480	60Hz
S06	640	512	60Hz
S07	960	540	60Hz
S08	480	270	60Hz
S09	304	224	60Hz
S0A	1280	720	50Hz
S0B	640	360	60Hz
S0C	800	600	60Hz
S0D	1024	768	60Hz
S0E	720	576	50Hz

		Not Working			
		Working with major issues		Working with minor issues	
		V4 Certified Monitors		No Issues	
Vendor	Model	Diagonal	AGA (PAL/NTSC)	SAGA (1280x720)	
Acer	VG240Y				
AOC	12490VXQ				
Asus	VC279				
Avermedia	GC553	capturecard			
Dell	P2419HC	23.8"			
Elgato	4k mk.2	capturecard			
HP	2511	25"			
LG	OLED 65C7				
LG	43UD79				
MSI	MAG322CQR	31.5"			
Samsung	SMS27A650	27"			
Samsung	Syncmaster TA350	22"			
Samsung	T24D390	24"			
Samsung	SyncMaster P2470	24"			
ViewSonic		24"			
ViewSonic		27"			
ViewSonic		32"			
Samsung	933HD TV	19"			
Panasonic	TX-24GW334	24"			
EIZO	EV2451	24"			
EIZO	EV2795	27"			
EIZO	EV2736	27"			
Samsung	T220	22"			
Asus	ROG PG279	27"			
Asus	VG245	24"			
iiyama	ProLite XB2783HSU	27"			
Telefunken	TE22275B35TXG	22"			
acer	r221q	22.1"			
HP	ZR2440w	24"			
Sharp	LCC3237UT	32"			

Please add yours to **V4 Certified Monitors** online list:

<https://tinyurl.com/v4standalone>

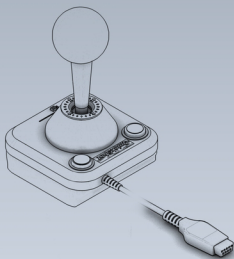
# V4+ Checklist

## USB Keyboard, Mouse & Joypad

Your V4+ comes with three USB-A ports for connecting keyboard, mouse and joypad. Be aware that each USB port is **dedicated for a specific type of compatible device** as your V4+ directly interprets the output signal from USB-A devices without an intermittent USB-stack. Best choice is to use the excellent USB keyboard, mouse and joypad offering from the Apollo Shop.

Apollo Teams keeps track of compatible devices based on user feedback. This list will be extended based on user feedback on Apollo Discord.

<https://tinyurl.com/compatibleusb>

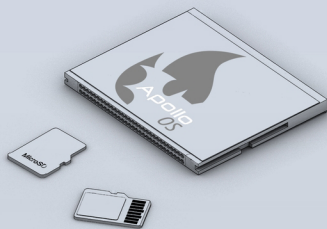


## DB-9 Mouse & Joystick

Yes, you can use your classic "Tank" mouse and "Arcade" joystick and experience the original Amiga Game feeling. Make sure to follow the setup instructions in the next chapter.

Also be aware that if you combine an USB mouse with a DB-9 mouse they both will be active at the same time. The same is true for the combination of USB and DB-9 joysticks.

Last point of attention is to **disable autofire** on your joystick if present.



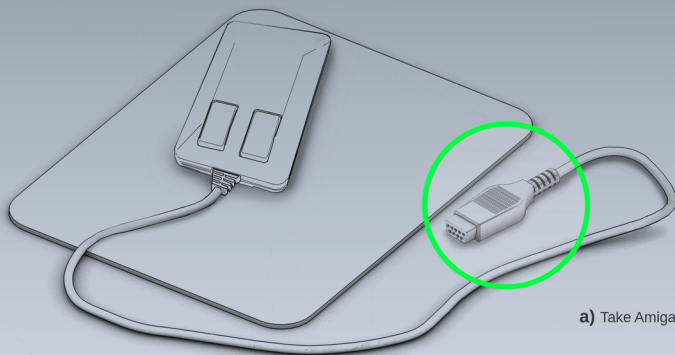
## microSD card

Your V4+ comes with a microSD card slot for additional (removable) harddisk storage, file-exchange with PC/Mac or back-ups. Apollo OS and the classic Amiga OS by default use the **FAT32 file-system**.

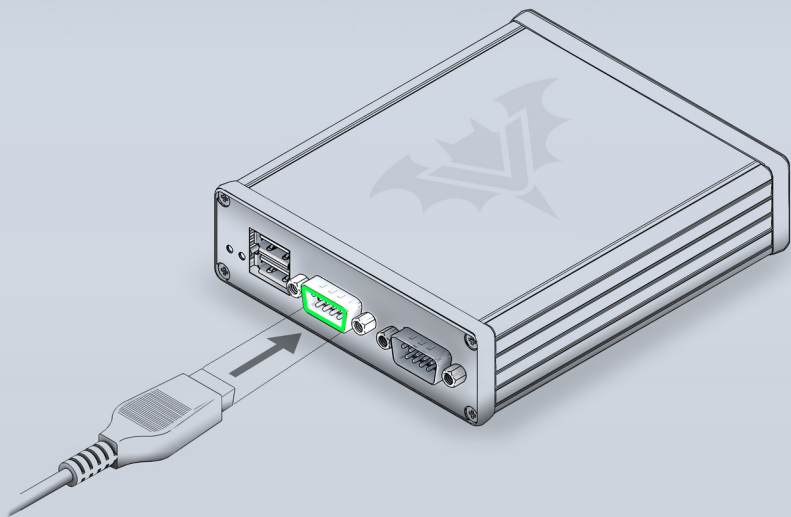
Make sure that your microSD card is properly formatted, which is especially important for 64Gb or larger microSD card, which are factory formatted on ex-FAT file-system.

# Setting up your system

## 1. Attaching Amiga mouse



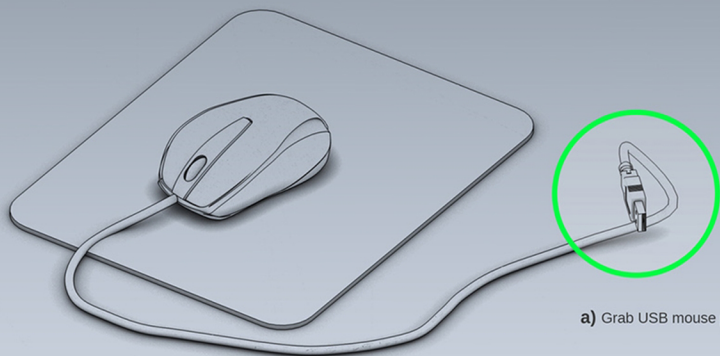
a) Take Amiga mouse plug



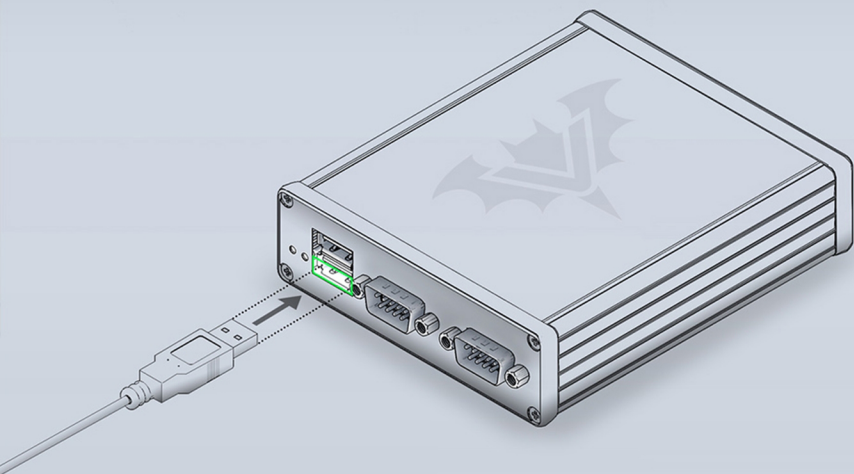
b) Then insert the plug into the DB9 mouse port (highlighted)

# Setting up your system

## 1. Attaching a USB mouse



a) Grab USB mouse plug

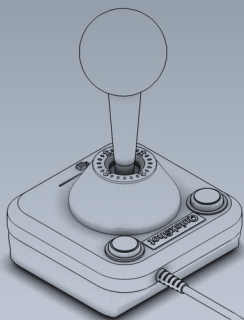


b) Then insert the plug into the USB mouse port (highlighted)

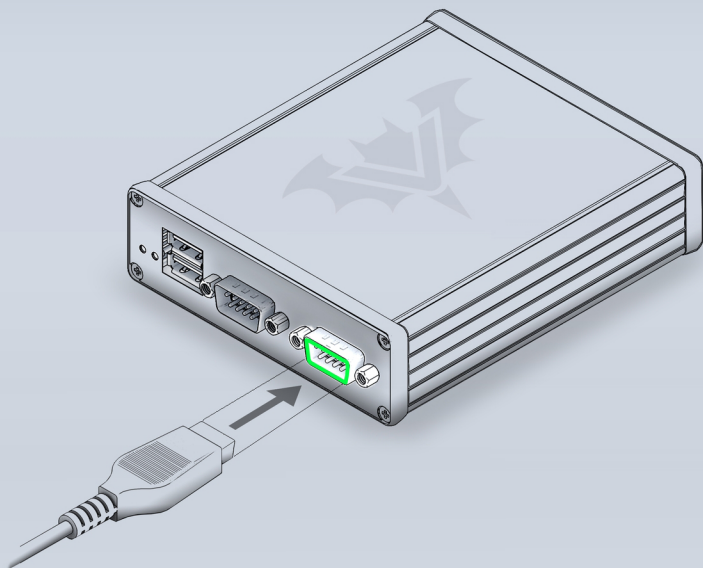


# Setting up your system

## 1. Attaching an Amiga joystick



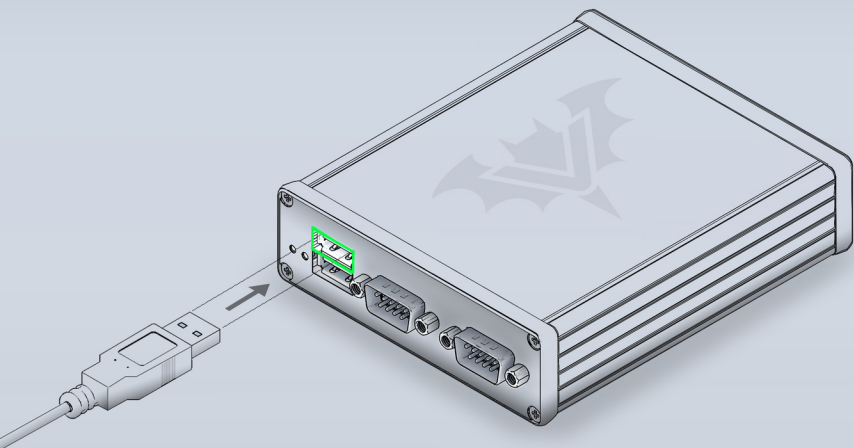
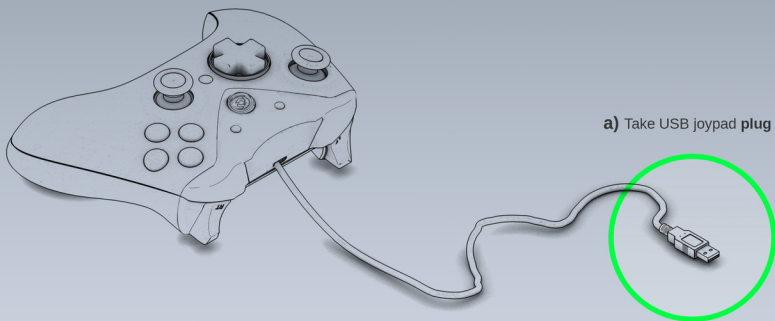
a) Grab an Amiga joystick plug



b) Then insert the plug into the DB9 joystick port (highlighted)

# Setting up your system

## 1. Attaching a USB joypad



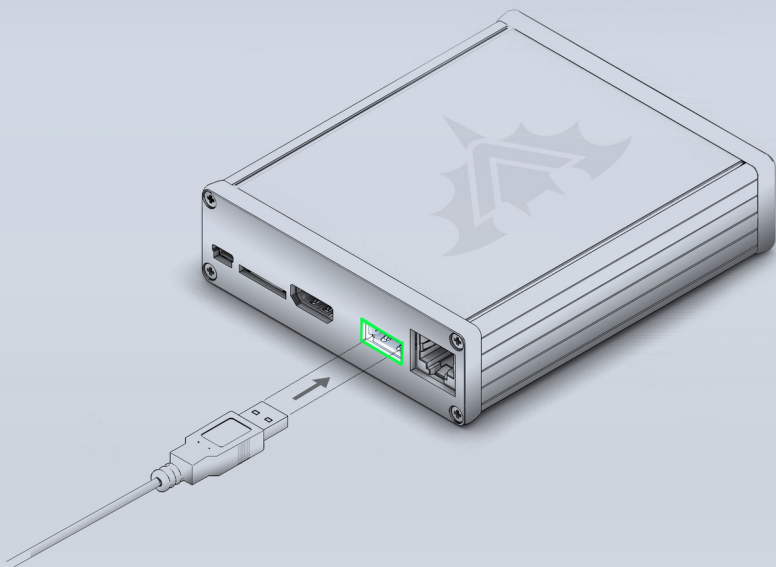
b) Then insert the plug into the top USB joypad port (highlighted)

# Setting up your system

## 1. Attaching a USB keyboard



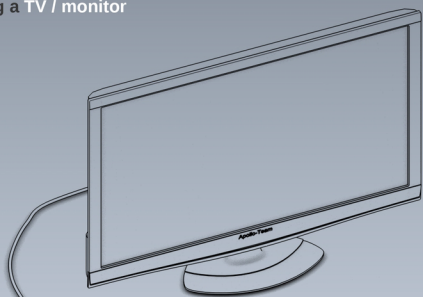
a) Take USB keyboard plug



b) Then insert the plug into the USB keyboard port (highlighted)

# Setting up your system

## 1. Attaching a TV / monitor



a) Take a TV / monitor plug



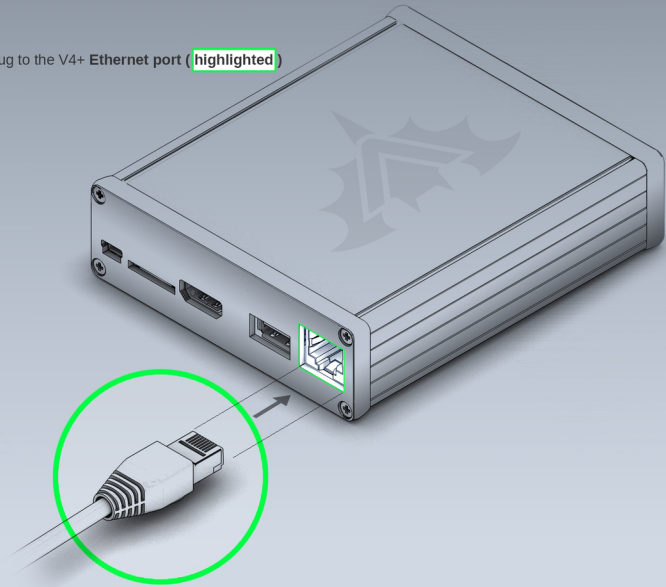
b) Then insert the plug into the DIGITAL AV port (highlighted)



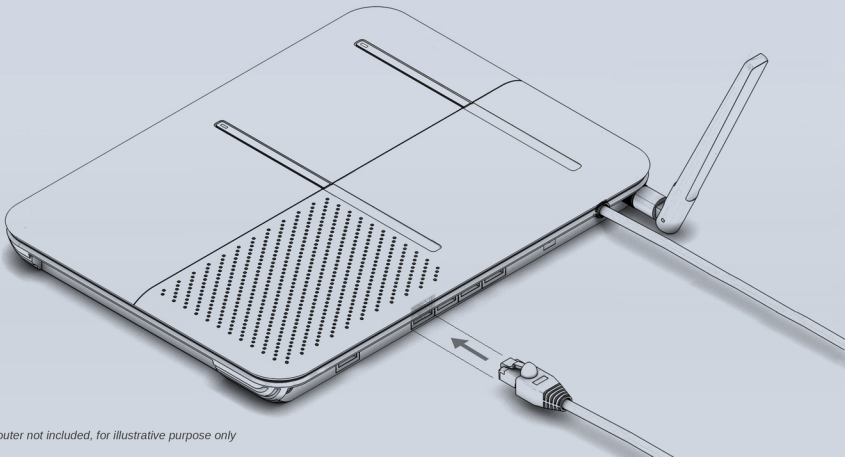
# Setting up your system

## 1. Attaching Ethernet

- a) Connect an Ethernet plug to the V4+ Ethernet port (highlighted)



- c) Then connect the other end of Ethernet cable to the networking device (eg. router or another computer)



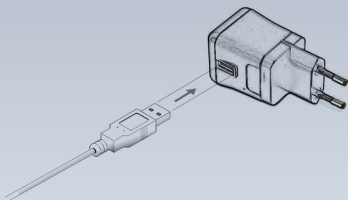
# Setting up your system

## 1. Attaching a power supply (EU)

a) Take provided LogiLink 1.8m cable



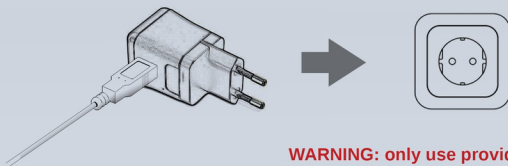
b) Connect LogiLink 1.8m cable to the plug



c) Connect the other end of LogiLink 1.8m cable to the V4+ Power port (USB Mini-B, **highlighted**)



d) To power on the V4+ connect the PSU plug to the electrical outlet



Only use provided power supply and LogiLink cable from Apollo!

Like original A500 and A1200, the V4+ turns on/off by using the power supply (PSU).

There is no power button on the V4+, just like there was no power button on A1200 or A600.

You can use a good quality power strip with a switch if you need one.



**DO NOT** use USB power switches!

**DO NOT** use USB-Blaster data cable to power the V4+!



**WARNING:** only use provided PSU and LogiLink cable

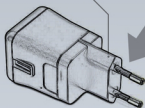
# Setting up your system

## 1. Attaching a power supply (US).

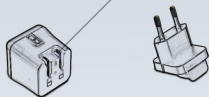
\* US PSU is convertible.

How to prepare the PSU:

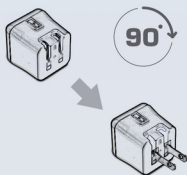
a) Push that part



b) The PSU splits revealing hidden US prongs



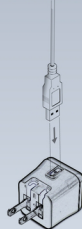
c) Open the US prongs by rotating it 90 degrees to change its position



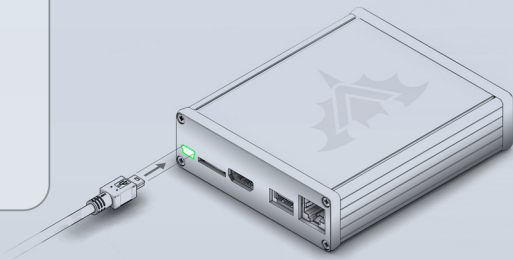
d) Take longer LogiLink 1.8m cable



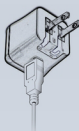
e) Connect LogiLink 1.8m cable to the PSU



f) Connect the other end of LogiLink 1.8m cable to the V4+ Power port (USB Mini-B, highlighted)



g) To power on the V4+ connect the PSU plug to the electrical outlet



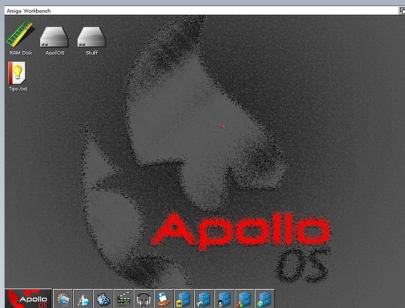
There is no separate power button on V4+. Just like A500 or A1200 the system is powered on/off using the PSU.

# Getting Started

## Booting your V4+ for the first time

Your Vampire V4+ comes **pre-installed with Apollo OS** on the internal harddisk (CompactFlash). All you have to do is connect your V4+ as described in the previous chapter and turn the power on. Your screen will shortly display green bars, followed by a black screen and after a few seconds your Apollo OS desktop becomes visible. From here you can get yourself familiar with Apollo OS and all the applications, games and tools we have preloaded for you.

Please check the **Apollo OS Quick Guide** for the basic usage of Apollo OS



## Resetting your V4+

To reset your V4+ press the Ctrl-Win-Ctrl combination (or Strg-Win-Strg) as shown in the table below. Be sure to check if the harddisk activity led (green) is inactive or else you will risk data corruption. In cases a power cycle is required be sure to **pause for 10 seconds** between power-off and power-on.

Keyboard	Function
Left-Ctrl	Soft Reset (C-A-A)
Windows-Key	
Right-Ctrl	
F11	Scanlines (toggle)
F12	Turtle Mode (toggle)
Print	PAL 576p - 50Hz (AGA)
Scroll Lock	NTSC 480p - 50Hz (AGA)
Pause	NTSC 480p - 60Hz (AGA)

## Game compatibility

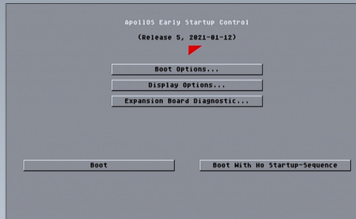
When playing classic Games in AGA mode **use the F11 key to toggle the nostalgic scanlines and the F12 key to slow your V4+ down** to the speed of the nineties for better game compatibility. The red power-led will go in dimmed mode when Turtle mode is active. If you start you WHDLoad game from Apollo OS the Turtle mode with be enabled automatically.



# Troubleshooting

## Early Boot Menu

If for some reason your V4+ does not boot into the Apollo OS desktop screen, you can press and hold both mouse-buttons during boot to enter the “Early Boot Menu” (EBM). This menu will show the current V4+ firmware (Core) and gives access to tools that can be used for troubleshooting based on instructions given from Apollo Team members available at Apollo Forum and Discord.



Early Boot Menu screen

## Boot Error

If your V4+ displays the “Insert IDE Boot Drive” screen on your first boot attempt there is the possibility that the internal harddisk (CompactFlashF card adapter) **has come loose during transport**.

To resolve this:

1. Wear properly grounded ESD strap
2. Open the case by disconnecting all the cables - make sure PSU and Digital A/V cables are disconnected.
3. Remove the screws on Ethernet port side, slide the top metal cover
4. Carefully check if the CompactFlash card and the CompactFlash IDE adapter are firmly in their sockets
5. If not gently and securely put them back into place.

Power on your V4+ to check if the issue is resolved. If not, please contact Apollo Team members at Apollo Forum and Discord.



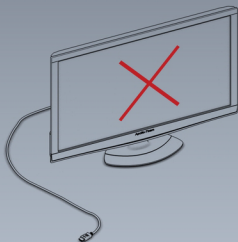
Apollo OS bootscreen

## Discord Support

Most of the troubleshooting issues was already solved by an amazing community on Apollo Discord server. Be sure to join as soon as possible to get answers to your most urgent questions:

<https://discord.gg/WnGK7MS>

# Troubleshooting



## No Display

If your monitor/TV displays a black screen, **please first check again the previous chapter** on compatibility and setting up your V4+. Make sure the V4+ red power-light is on, the cable is correctly attached on both sides and the right input channel is chosen on your monitor/TV.

Before contacting Apollo Team for support, please try at least one other monitor/TV to check if the issue is persistent.

## Distorted Display

By default the Apollo OS desktop is set on the most common 1280x720@50Hz resolution (720p), but can be dynamically changed by the user to the supported SAGA resolutions stated in the previous chapter.

Most monitors available should display these outputs good without any specific user-settings. If however your display is cropped then look in your monitor manual for settings like “zoom” and “PC mode” to **force the monitor in a 1:1 display** of the received input.

If your display looks stretched look for **settings like “display ratio” or “screen dimension”** to set the right ratio. For the SAGA default 1280x720 (720p) output resolution this ratio is 16:9, but for Early Boot menu, game or applications based on OCS/ECS/AGA the default setting is PAL with a 4:3 ratio.

If your monitor is NTSC-only and does not accept a PAL signal, you can use the keys in the table below to toggle output.

Keyboard	Function
Vampire V4 Keyboard Shortcuts	
Left-Ctrl	Soft Reset (C-A-A)
Windows-Key	
Right-Ctrl	
F11	Scanlines (toggle)
F12	Turtle Mode (toggle)
Print	PAL 576p - 50Hz (AGA)
Scroll Lock	NTSC 480p - 50Hz (AGA)
Pause	NTSC 480p - 60Hz (AGA)